



CardRaider

Product Manual

CardRaider is the fast and easy way to recover deleted media from your digital camera. Quickly recover photos, movies, and RAW images from any kind of memory card. CardRaider can also permanently erase photos and movies, so that they can no longer be recovered.

How does it work?

When a digital camera erases photos, it doesn't actually erase them. Instead, it just forgets where they are located on the memory card. As you take new pictures, the old picture data eventually gets covered over with your new photos.

System Requirements:

- Mac OS X 10.3.9 or later
- PowerPC or Intel processor



Installing CardRaider:

To install, move the CardRaider folder to your Applications folder.

Uninstalling CardRaider:

To uninstall CardRaider, simply drag the CardRaider folder to the Trash icon on your dock.

Using CardRaider:

To use CardRaider for recovering photos, follow these steps:

Connecting to your memory card:

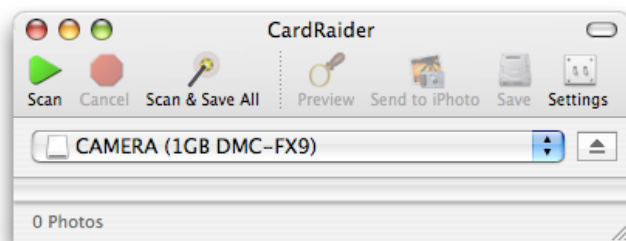
Some cameras allow memory card access when connected to your Mac via the USB cable supplied with the camera. With other camera models, this is not possible and a memory card reader is required.

To determine if a card reader is required, follow these steps:

- 1) Connect your camera to your Mac using the USB cable supplied with the camera.
- 2) Turn on your camera and switch it to Preview mode. (Also called Playback mode, PC Mode, or Review mode.) You may also want to review your camera's manual and follow the instructions for attaching the camera to a computer.

NOTE: Attaching the camera may cause iPhoto or other camera utilities to automatically appear. You can safely ignore or quit these programs.

- 3) Double-click CardRaider.
- 4) You should see your camera's memory card appear in the Card menu as shown below:

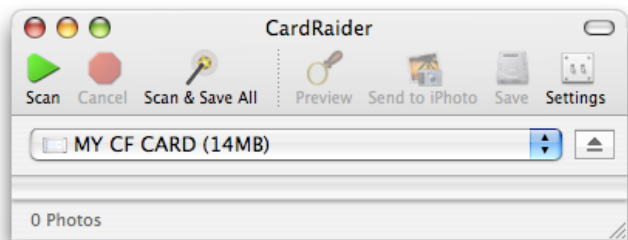


- 5) If you don't see your camera appear, and it continues to say "No Cards Found", then you will need to use a memory card reader. If you do see your card appear, then skip to Scanning Your Card.

Using a Memory Card Reader:

To use a memory card reader, attach the reader to an available USB port. Turn your camera off. Then, following the instructions for your camera, carefully remove the memory card from the camera, and insert it into the proper slot of the card reader.

When you launch CardRaider, you should see the memory card appear in the Card menu as shown below:



The CardRaider Toolbar and Action Menu:

Most CardRaider features are accessed by clicking on the toolbar as shown above:

Other features are accessed in the Action menu as shown below:

Action	Window	Help
Start Scan		⌘G
Cancel Scan		⌘.
Scan and Recover All		⌘R
Scan and Send All to iPhoto		⇧⌘R
Preview Selected		⌘P
Save Selected...		⌘S
Send Selected to iPhoto		⌘I
Permanently Delete Photo...		⌘⌫
Erase All Free Space...		⇧⌘⌫
Eject		⌘E

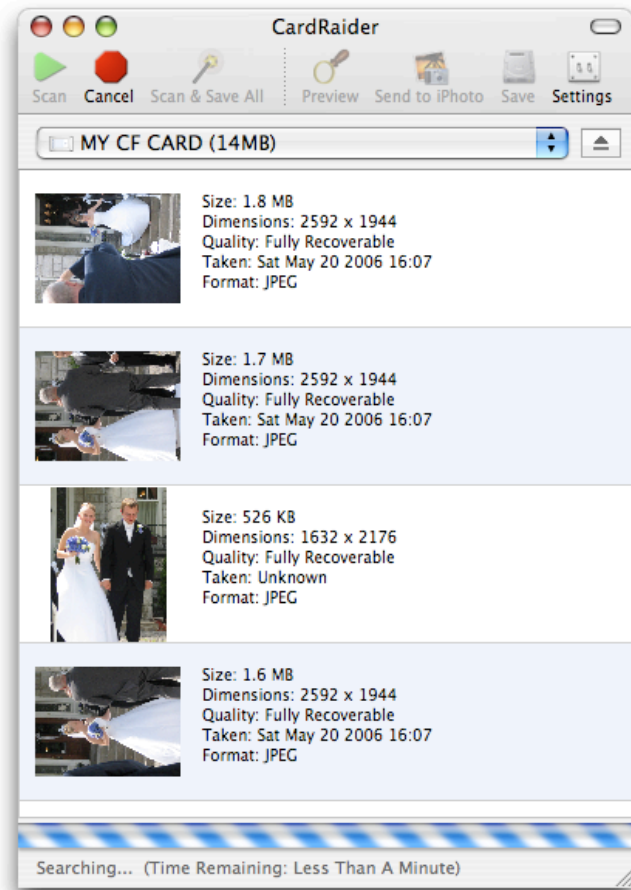
Scanning Your Card:

To start searching your card for deleted photos, click the Scan button.

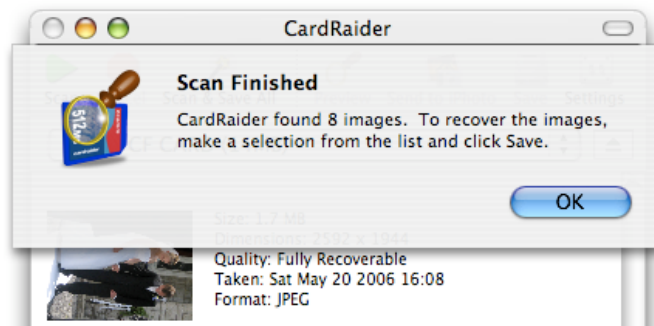
CardRaider will show you each photo as it is found along with the photo's size, capture date, dimensions, and format.

For very large cards, it may take several minutes for the scan to complete.

To cancel a scan in progress, click the Cancel button.



CardRaider will let you know when the scan is complete with the following message.

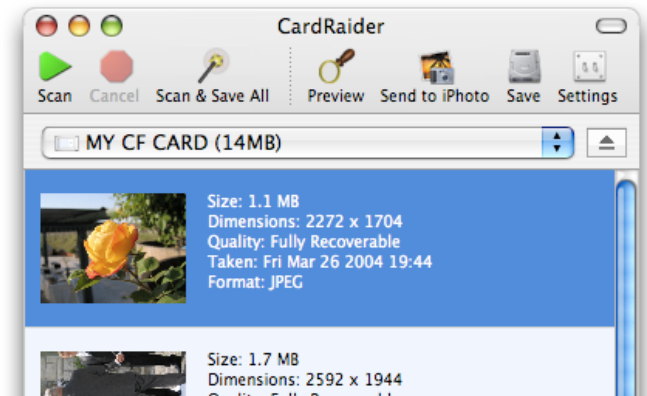


Recovering the Photos:

Selecting a Photo:

To select a photo from the list, click it once so that the row is highlighted. You can select multiple photos by holding the shift or Apple key while clicking.

You can also choose Select All from the File menu to select all the photos in the list.



Previewing a Photo

You can see larger versions of the photos by double-clicking the thumbnail images, or by selecting an image and then clicking the Preview button.

A Preview window will appear showing you a detailed photo. You can make this window larger by dragging in the lower-right corner or clicking the green Zoom button in the top-left.



Saving a Photo or Movie:

To recover to your computer, select one or more items and click the Save button.

If multiple photos are selected, you will be prompted to choose a folder to save the photos into. The files will automatically be named according to their capture date.

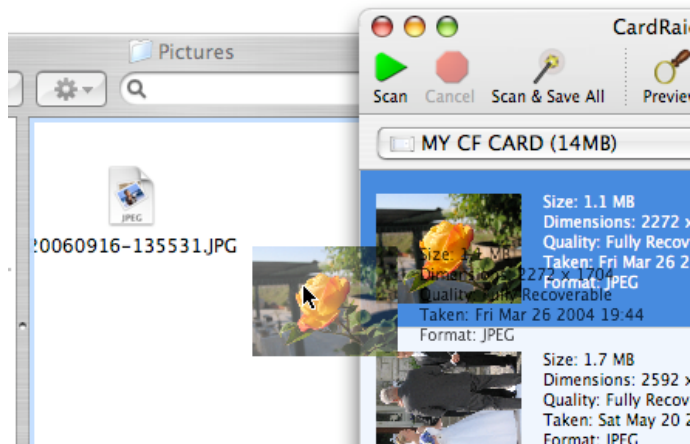
Sending to iPhoto:

You can send selected photos directly to iPhoto by clicking the Send to iPhoto button. Photos sent to iPhoto will automatically be added to a Recovered Photos album.

Other Recovery Options:

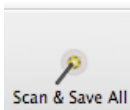
Dragging:

You can also save photos by dragging them from the list, into the Finder or other programs as shown below.



Scan & Save All:

Click the Scan & Save All button to automatically scan a card and recover all found images to your disk in one step.



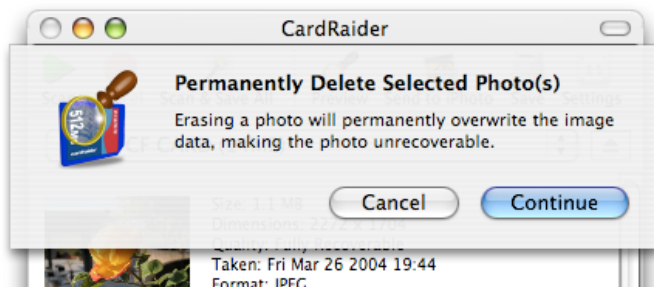
You can also choose to send all found images to iPhoto by selecting Scan and Send All to iPhoto from the Action menu.

Permanently Deleting Photos (Erasing Free Space):

Selectively Deleting Photos:

Permanently deleting a photo means that it can no longer be recovered by programs like CardRaider. To permanently delete photos, first delete them using the delete feature on your camera. Then, scan the card using CardRaider.

Select one or more photos in the list and choose Permanently Delete Photo from the Action menu.

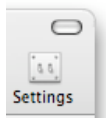


Erasing All Free Space:

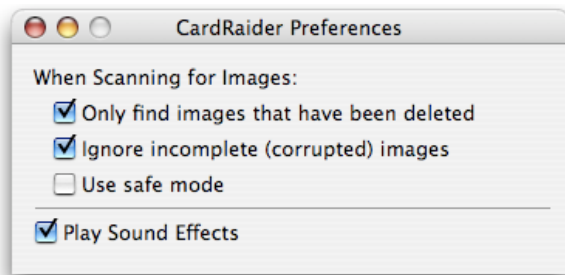
To permanently erase all deleted photos on card, select Erase All Free Space from the Action menu.

CardRaider Settings:

Click the Settings button to show the CardRaider Preferences window.



The following options are configurable:



Only find images that have been deleted:

Normally, CardRaider only looks for deleted images. To look for all images, even images which are still visible to the camera, uncheck this option and start a new scan.

Ignore incomplete (corrupted) images:

Normally, CardRaider ignores images which do not appear to be complete. To show incomplete images, uncheck this box and start a new scan.

Use safe mode:

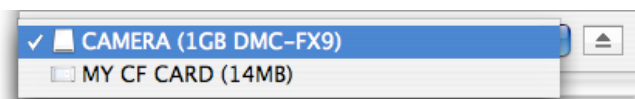
Scanning an extremely corrupted card can sometimes CardRaider to crash. If this happens, enable this option and try again. Safe mode does only what's necessary to extract your JPEGs. Safe mode will not find movies or RAW files. Also, safe mode will not show any previews.

Play Sound Effects:

To turn off CardRaider's sound effects, uncheck this box.

Switching and Ejecting Cards:

If more than one card is present, you can select which card to use in the Disk menu.



Before you disconnect your camera or card reader, you should use the eject button to the right of the Disk menu to eject the card.

Supported Image Formats:

In addition to the standard JPEG format, CardRaider finds the following professional "RAW" formats:

Canon Raw, Canon Raw 2, Canon Raw TIFF, Nikon Raw, Konica Minolta Raw, Fuji Raw, Olympus Raw, Pentax Raw, Sony Raw (Alpha Raw 1 & 2), Sony Raw 2, Panasonic Raw, Kodak Raw, Leaf Raw, Sigma Raw, Digital Negative (Adobe Raw), Hasselblad H3D, Epson Raw, Leica Raw, and Mamiya Raw.

Supported Movie Formats:

CardRaider will recover AVI, MOV, and MPG files.

Support and Troubleshooting:

For more information and technical support info, please visit our web site:
<http://www.ecamm.com>

CardRaider Copyright 2006–2008 Ecamm Network, LLC

Ecamm Network, LLC is not responsible for any loss or damage to you or your property, including your computer, from use of our software. Any use of this software is at your own discretion and risk and you will be solely responsible for any damage to your computer system or loss of data that may result from its use. You agree to defend, indemnify and hold harmless Ecamm Network, LLC and its employees, from and against all claims and expenses, including attorney fees, arising out this software. YOUR USE OF THIS SOFTWARE IS AT YOUR SOLE RISK. THIS SOFTWARE IS PROVIDED ON AN "AS IS" AND "AS AVAILABLE" BASIS.